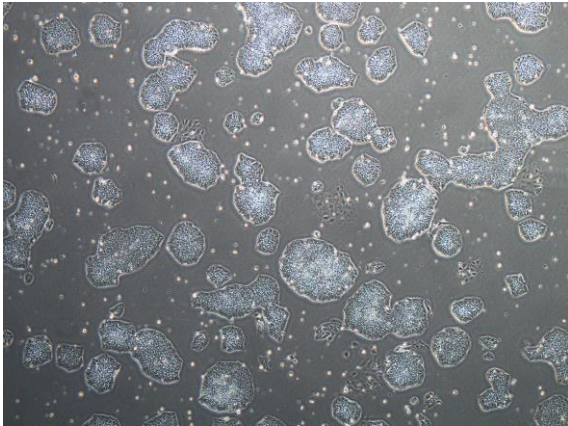
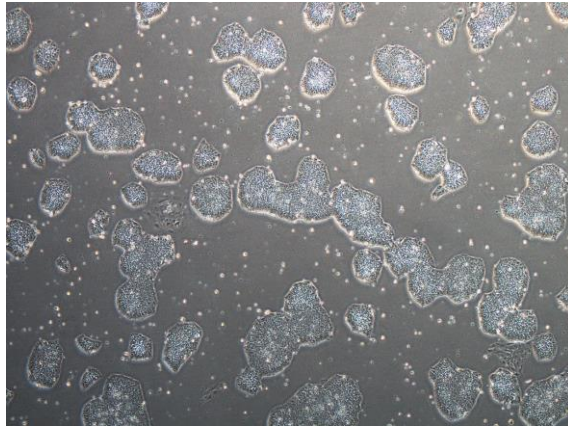


【 CiRA-j-1080 】 Morphology of iPSC colonies

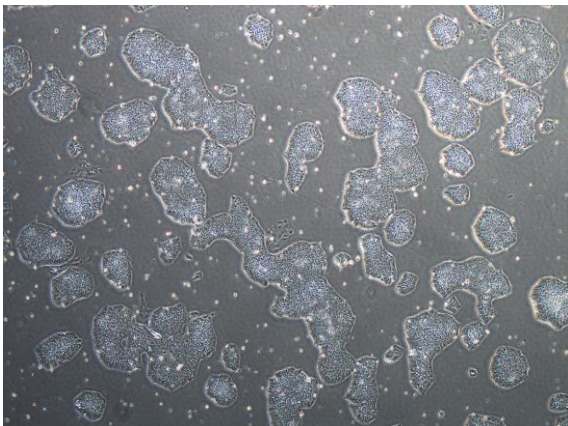
CiRA-j-1080-A: passage-2



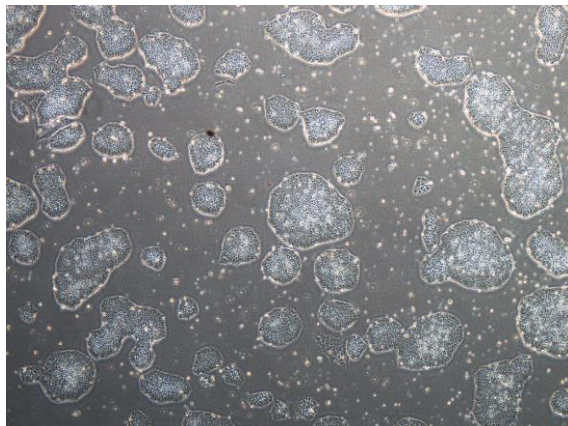
CiRA-j-1080-B: passage-2



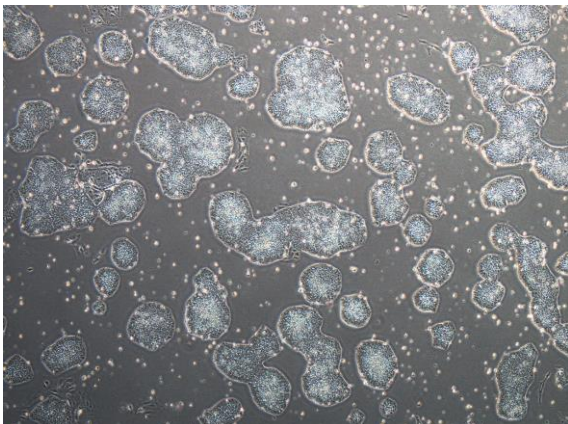
CiRA-j-1080-C: passage-2



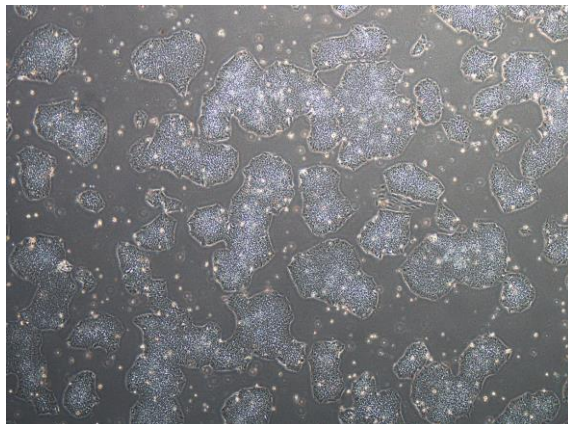
CiRA-j-1080-D: passage-2



CiRA-j-1080-E: passage-2



CiRA-j-1080-F: passage-2



(All images were captured at 4x magnification)